

DEPARTMENT OF THE ARMY TECHNICAL MANUAL

---

NATIONAL MAINTENANCE REPAIR PARTS  
AND SPECIAL TOOLS LISTS

CHANNEL ALIGNMENT INDICATORS ID-292/PRC-6  
**AND ID-292A/PRC-6**  
**FSN 6625-355-7826**

---

Headquarters, Department of the Army, Washington, D.C.  
2 April 1973

---

*Current as of October 1972*

	Paragraph	Page
SECTION I. INTRODUCTION		
Scope	1-1	2
General	1-2	2
Explanation of columns	1-3	2
Special information	1-4	4
Location of repair parts	1-5	4
Abbreviations (Not applicable)	1-6	4
Reporting of equipment publication improvements	1-7	4
II. PRESCRIBED LOAD ALLOWANCE (Not applicable),		
III. REPAIR PARTS LIST		6
IV. SPECIAL TOOLS, TEST AND SUPPORT EQUIPMENT (Not applicable)		
V. INDEX-FEDERAL STOCK NUMBER AND REFERENCE NUMBER CROSS- REFERENCE TO FIGURE AND ITEM NUMBER		7

\*This manual supersedes TM 11-6625-332-12P, 5 December 1961

## SECTION I

### INTRODUCTION

#### 1-1. Scope

This manual lists repair parts and special tools required for the performance of organizational maintenance of the ID-292/PRC-6 and ID-292A/PRC-6. The PCCN for the ID-292/PRC-6 and ID-292A/PRC-6 is GCWABR for all models.

#### 1-2. General

This repair parts and special tools list is divided into the following sections:

*a. Prescribed Load Allowance (PLA)—Section II.* Not applicable.

*b. Repair Parts List—Section III.* A list of repair parts authorized for the performance of maintenance at the organizational level. This repair parts list is arranged in alphabetical order.

*c. Special Tools, Test and Support Equipment—Section IV.* Not applicable.

*d. Index—Federal Stock Number and Reference Number Cross-Reference to Figure a 4 Item Number—Section V.* A list, in ascending numerical sequence, of all Federal stock numbers appearing in the listings, followed by a list, in alphabetic sequence, of all reference numbers appearing in the listings. Federal stock number and reference numbers are cross-referenced to each illustration figure and item number or reference designation appearance.

#### 1-3. Explanation of Columns

The following provides an explanation of columns in the repair list

*a. Source, Maintenance, and Recoverability Codes (SMR).*

(1) *Source code.* Indicates the source for the listed items. Source codes are—

<i>Code</i>	<i>Explanation</i>
P	Repair parts, special tools and test equip-

<i>Code</i>	<i>Explanation</i>
	ment supplied from the GSA/DSA or Army supply system and authorized for use at indicated maintenance categories.
P2	Repair parts, special tools and test equipment which are procured and stocked for insurance purposes because the combat or military essentiality of the end item dictates that a minimum quantity be available in the supply system
P9	Assigned to items which are NSA design controlled: unique repair parts, special tools, test, measuring, and diagnostic equipment, which are stocked and supplied by the Army COMSEC Logistic System, and which are not subject to the provisions of AR 380-41.
P10	Assigned to items which are NSA design controlled: special tools, test, measuring, and diagnostic equipment for COMSEC support, which are accountable under the provisions of AR 389-41, and which are stocked and supplied by the Army COMSEC Logistic System.
M	Repair parts, special tools and test equipment which are not procured or stocked as such in the supply system but are to be manufactured at indicated maintenance levels.
A	Assemblies which are not procured or stocked as such but are made up of two or more units. Such component units carry individual stock numbers and descriptions, are procured and stocked separately, and can be assembled to form the required assembly at indicated maintenance categories
X	Parts and assemblies that are not procured or stocked because the failure rate is normally below that of the applicable end item or component. The failure of such part or assembly should result in retirement of the end item from the supply system

<i>Code</i>	<i>Explanation</i>
X1-	Repair parts which are not procured or stocked The requirement for such items will be filled by the next higher assembly or component
X2-	Repair parts, special tools and test equipment which are not stocked and have no foreseen mortality. The indicated maintenance category requiring such repair parts will attempt to obtain the parts through cannibalization or salvage. The item may be requisitioned, with exception data, from the end item manager for immediate use.
G-	Major assemblies that are procured with PEMA funds for initial issue only as exchange assemblies at DS and GS level. These assemblies will not be stocked above DS and GS level or returned to depot supply level.

**NOTE**

Cannibalization or salvage may be used as a source of supply for any items source coded above except those coded X1 and aircraft support items as restricted by AR 700-42.

(2) Maintenance code. Indicates the lowest category of maintenance authorized to install the listed item. The maintenance level code is-

<i>Code</i>	<i>Explanation</i>
C	Crew/operator
0	Organizational maintenance

(3) **Recoverability** code. Indicates whether unserviceable items should be returned for recovery or salvage. Items not coded are expendable. Recoverability codes are-

<i>Code</i>	<i>Explanation</i>
R-	Repair parts (assemblies and components), special tools and test equipment which are considered economically repairable at direct and general support maintenance levels. When the item is no longer economically repairable, it is normally disposed of at the GS level. When supply considerations dictate, some of these repair parts may be listed for automatic r-turn to supply for depot level repair as set forth in AR 710-1. When so listed, they will be replaced by supply on an exchange basis.
S-	Repair parts, special tools and test equipment, and assemblies which are economically repairable at DS and GS activities

<i>Code</i>	<i>Explanation</i>
	and which normally are furnished by supply on an exchange basis. When items are determined by a GSU to be uneconomically repairable, they will be evacuated to a depot for evaluation and analysis before final disposition.
T-	High dollar value recoverable repair parts, special tools and test equipment which are subject to special handling and are issued on an exchange basis. Such items will be repaired or overhauled at depot maintenance activities only. No repair may be accomplished at lower levels.
U-	Repair parts, special tools and test equipment specifically selected for salvage by reclamation units because of precious metal content, critical materials, high dollar value, or reusable casings or castings.

**b. Federal Stock Number.** Indicates the Federal stock number assigned to the item and will be used for requisitioning purposes.

**c. Description.** Indicates the Federal item name and a minimum description required to identify the item. The last line indicates the reference number followed by the applicable Federal Supply Code for Manufacturer (FSCM) in parentheses. The FSCM is used as an element in item identification to designate manufacturer or distributor or Government agency, etc., and is identified in SB 703-42.

**d. Unit of Measure (U/M).** Indicates the standard or basic quantity by which the listed item is used in performing the actual maintenance function. This measure is expressed by a two-character alphabetical abbreviation; e.g., ea, in, pr, etc., and is the basis used to indicate quantities and allowances in subsequent columns. When the unit of measure differs from the unit of issue, the lowest unit of issue that will satisfy the required units of measure will be requisitioned.

**e. Quantity Incorporated in Unit.** This column indicates the quantity of the item used in the equipment.

**f. 15-Day Organizational Maintenance Allowance.**

(1) The repair parts indicated by an asterisk in the allowance column represent those authorized for use at the organizational category, and will be requisitioned on an "as required" basis, until stockage is based on demand in accordance with AR 710-2.

(2) Major Army commanders are authorized to approve reduction in the range of support items authorized for use in units within their commands Recommendations for increase in range of items authorized for use will be forwarded to Commander, US Army Electronics Command, ATTN: AMSEL-MA-CW, Fort Monmouth, NJ 07703. Any changes approved will be reflected in a revision to the RPSTL.

(3) Allowance quantities are indicated in the special tools list section for special tools, TMDE, and other equipment.

**g. Illustration.** This column is divided as follows :

(1) **Figure number.** Indicates the figure number of the illustration on which the item is shown in TM 11-5059.

(2) **Item number.** Indicates the item number or reference designation used to reference the item in the illustration.

**1-4. Special Information**

a Usable on codes are included in column 3. Uncoded items are applicable to all models. Identification of the usable on codes used in this publication are-

<i>Code</i>	<i>Used on</i>
A07	ID-292A/PRC-6
AT6	ID-292/PRC-6

h. The following publications pertain to the ID-292/PRC-6 and ID-292A/PRC-6 and its components :

TM 11-5059	Channel Alinement Indicators ID-292/PRC-6 and ID- 292A/PRC-6.
------------	---

**1-5. Location of Repair Parts**

n. This manual contains one cross-reference index (set V) to be used to locate a repair part when either the Federal stock number or reference number (manufacturer's part number) is known.

The first column in the index is prepared in numerical or alphanumeric sequence in ascending order. The reference numbers (manufacturer's part numbers) are listed immediately following the last listed Federal stock number in the index of Federal stock numbers.

**b** When the Federal stock number or reference number is known, follow the procedures given in (1) and (2) below.

(1) Refer to the index of Federal stock numbers (set V) and locate the Federal stock number or reference number. The FSN and reference number are cross-referenced to the applicable figure and item number or reference designation.

(2) Refer to the repair parts list (sec III) and locate the figure number (col 7a) and item number or reference designation (col 7b) as noted in the FSN index.

c. When the figure and item number or reference designation are known, scrutinize columns 7a and 7b of the repair parts list (sec III) until the item is located.

**d.** When the FSN, reference number, figure number, item number and reference designation are not known, scrutinize column 3 of the repair parts list (sec III), which is arranged in alphabetical order.

**1-6. Abbreviations**

Not applicable.

**1-7. Reporting of Equipment Publication Improvements**

The reporting of errors, omissions, and recommendations for improving this publication by the individual user is encouraged. Reports should be submitted on DA Form 2028 (Recommended Changes to Publications) and forwarded direct to Commander, US Army Electronics Command, ATTN : AMSEL-MA-CW, Fort Monmouth, N.J. **07703.**

[Next printed page is 6]

SECTION III

TM 11-6625-332-20P

(1) SMR CODE	(2) FEDERAL STOCK NUMBER	(3) DESCRIPTION REFERENCE NUMBER & MFR CODE      USABLE ON CODE		(4) UNIT OF MEAS	(5) QTY INC IN UNIT	(6) 15 DAY ORGANIZATIONAL MAINTENANCE ALW				(7) ILLUSTRATION	
						(a)	(b)	(c)	(d)	(a)	(b)
						1-5	6-20	21-50	51-100	FIGURE NO	ITEM NO
P--C--	5960-230-5262	ELECTRON TUBE V1.....		EA	1	*	*	*	*	6 1	V1
P--U--	6625-306-2087	JAN5678 (81350).....		EA	1	*	*	*	*		O2
P--D--	5355-667-9206	GASKET O2.....		EA	1	*	*	*	*		O5
P--O--	5120-236-2140	SMB284458 (80063).....		EA	1	*	*	*	*		H2
		KNJB J5.....		EA	1	*	*	*	*		
		SMB284474 (80063).....		EA	1	*	*	*	*		
		SCREWDRIVER H2.....		EA	1	*	*	*	*		
		1017 (13082)									

SECTION V

TM 11-6625-332-20P

INDEX - FEDERAL STOCK NUMBER AND REFERENCE NUMBER  
CROSS-REFERENCE TO FIGURE AND ITEM NUMBER

STOCK NUMBER	FIGURE NO.	ITEM NO.	STOCK NUMBER	FIGURE NO.	ITEM NO.			
<del>5120-236-2140</del> 5355-667-9206		HZ 05	<del>5960-230-5262</del> 6625- 306-2087	<b>6-1</b>	VI 02			
	REFERENCE NO.	MFR CODE NO.	FIG. NO.	ITEM NO.	REFERENCE NO.	MFR CODE NO.	FIG. NO.	ITEM NO.
JAN5678 SMB284458		<b>01350</b> 80063	6-1	V1 02	SMB284474 1017	80063 13082		<b>05</b> H2

By Order of the Secretary of the Army.

**CREIGHTON W. ABRAMS**  
*General, United States Army*  
*Chief of Staff*

Official :

**VERNE L. BOWERS**  
*Major General, United States Army*  
*The Adjutant General*

Distribution :

To be distributed in accordance with DA Form 12-51 (qty rqr block No. 443) Direct and General Support Maintenance requirements for AN/TRC-75.

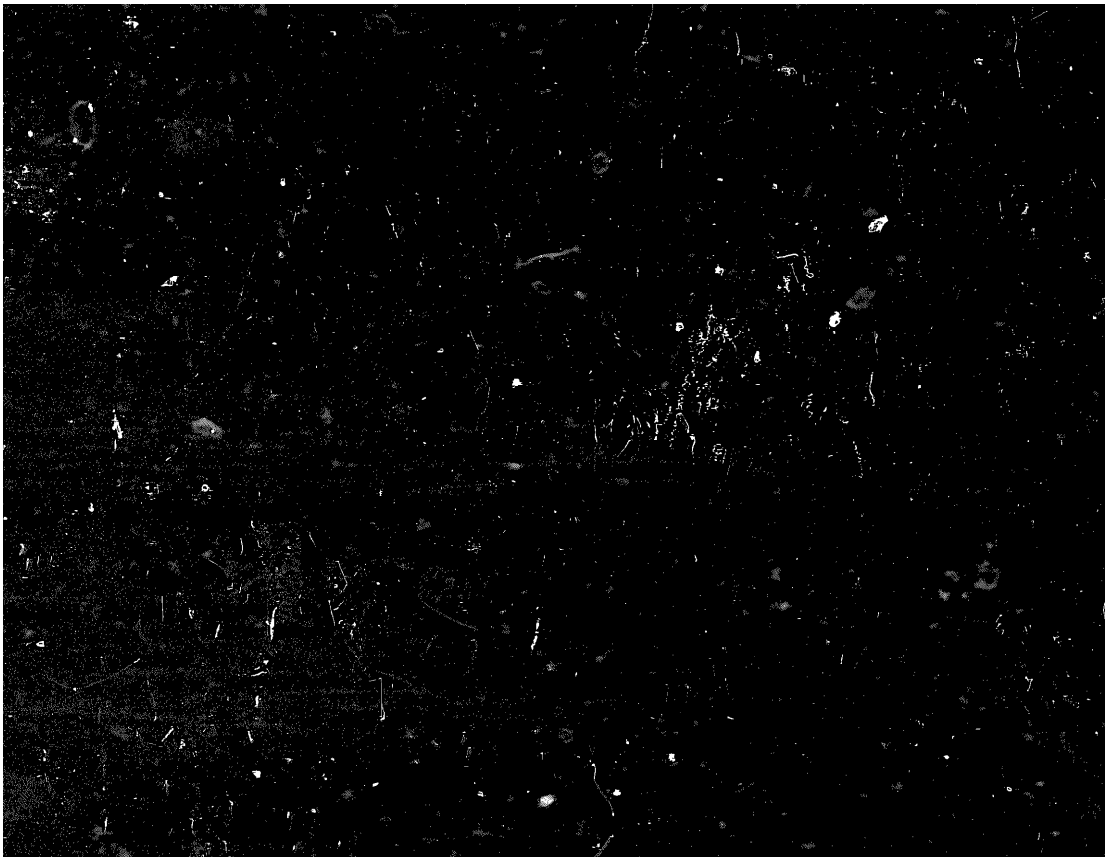
**END**

9-18-83

**DATE**

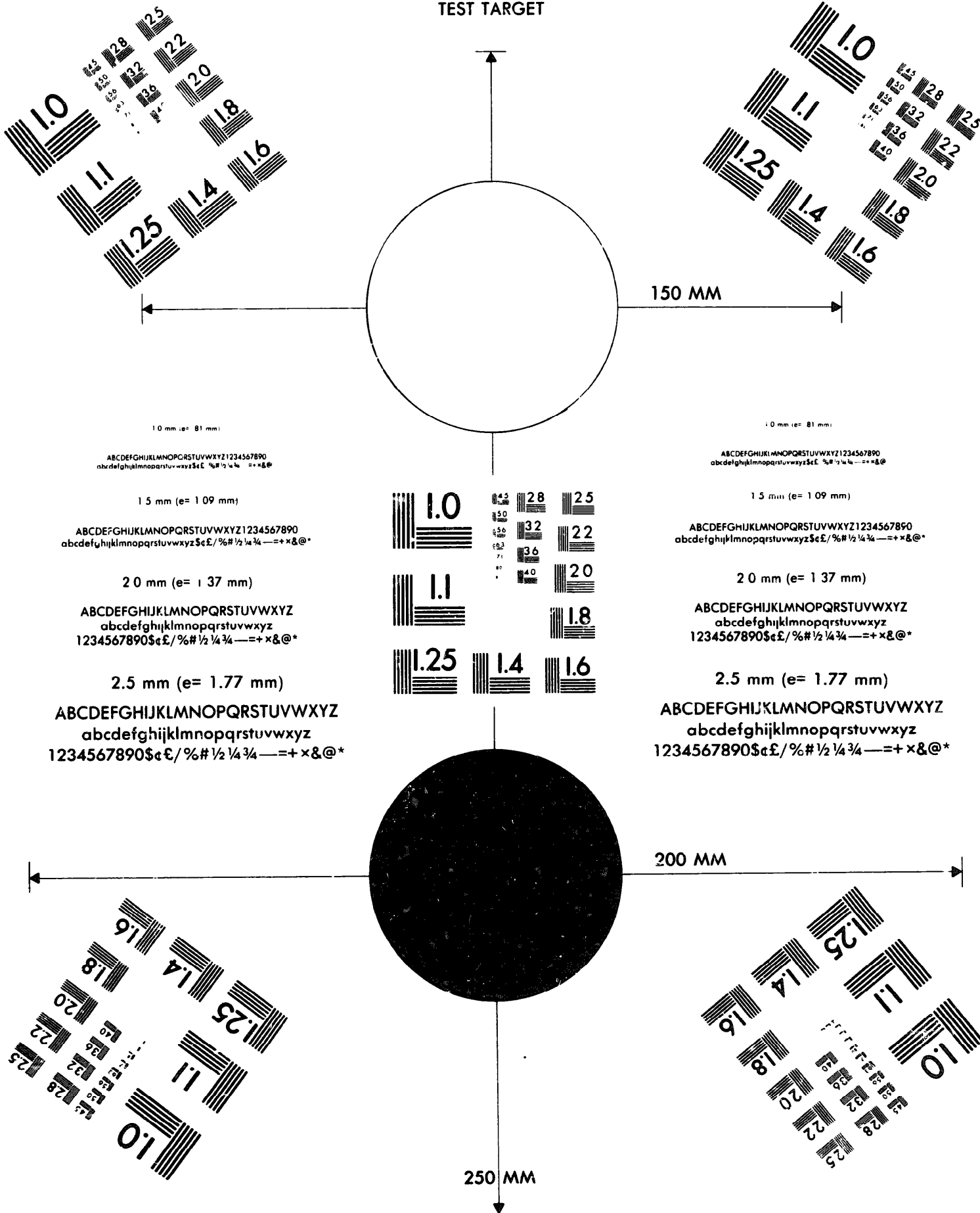






DEPARTMENT OF THE ARMY

MICROFORM  
TEST TARGET



1.0 mm (e= 81 mm)

ABCDEFGHIJKLMNQRSTUUVWXYZ1234567890  
abcdefghijklmnopqrstuvwxyz\$%&/'%# 1/2 1/4 3/4 —=+ x&@\*

1.5 mm (e= 1.09 mm)

ABCDEFGHIJKLMNQRSTUUVWXYZ1234567890  
abcdefghijklmnopqrstuvwxyz\$%&/'%# 1/2 1/4 3/4 —=+ x&@\*

2.0 mm (e= 1.37 mm)

ABCDEFGHIJKLMNQRSTUUVWXYZ  
abcdefghijklmnopqrstuvwxyz  
1234567890\$%&/'%# 1/2 1/4 3/4 —=+ x&@\*

2.5 mm (e= 1.77 mm)

ABCDEFGHIJKLMNQRSTUUVWXYZ  
abcdefghijklmnopqrstuvwxyz  
1234567890\$%&/'%# 1/2 1/4 3/4 —=+ x&@\*

1.0 mm (e= 81 mm)

ABCDEFGHIJKLMNQRSTUUVWXYZ1234567890  
abcdefghijklmnopqrstuvwxyz\$%&/'%# 1/2 1/4 3/4 —=+ x&@\*

1.5 mm (e= 1.09 mm)

ABCDEFGHIJKLMNQRSTUUVWXYZ1234567890  
abcdefghijklmnopqrstuvwxyz\$%&/'%# 1/2 1/4 3/4 —=+ x&@\*

2.0 mm (e= 1.37 mm)

ABCDEFGHIJKLMNQRSTUUVWXYZ  
abcdefghijklmnopqrstuvwxyz  
1234567890\$%&/'%# 1/2 1/4 3/4 —=+ x&@\*

2.5 mm (e= 1.77 mm)

ABCDEFGHIJKLMNQRSTUUVWXYZ  
abcdefghijklmnopqrstuvwxyz  
1234567890\$%&/'%# 1/2 1/4 3/4 —=+ x&@\*

200 MM

250 MM